



Creating an assessment with SMART Response assessment software

This *Quick Reference* provides the information that you need to design an assessment using SMART Notebook software and SMART Response assessment software. Before you begin, make sure that you install SMART Notebook software and SMART Response assessment software on your computer.

Opening SMART Notebook

SMART Notebook software is the student-facing part of the SMART Response system. You can use it to create and deliver digital lessons with SMART Response activities or assessments.

To open SMART Notebook software

- 1 Click the **SMART Response Assessment Software** icon in the notification area
- 2 Select **Ask Questions**. SMART Notebook opens.
- 3 Click the **SMART Response** tab in SMART Notebook

The SMART Response tab displays options for you to create question sets in your SMART Notebook file.



Tip: Clear the **Auto-hide** check box to keep the SMART Response assessment software tab open while you're working with the SMART Notebook file.

Creating your assessment

To label the assessment and group your questions you must first create a title page.

- 1 Click the **Title Page** button in the SMART Response tab. The *Insert Title Page* window appears.
- 2 Type your assessment information into the fields
- 3 Click **Add**. The title page for your assessment appears in the SMART Notebook work area.
- 4 Click **Next Steps** in the SMART Response tab.

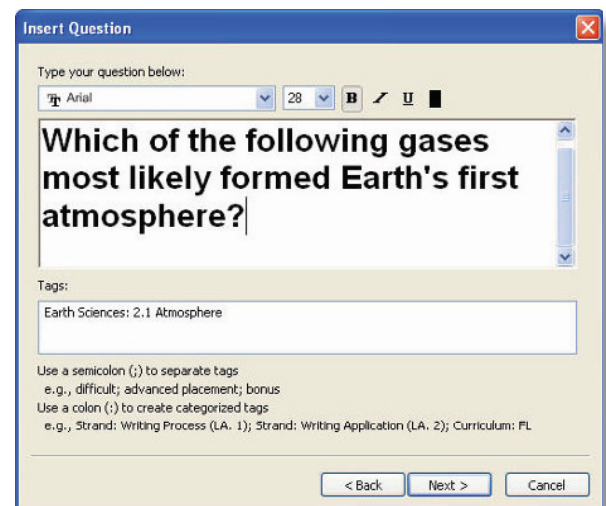
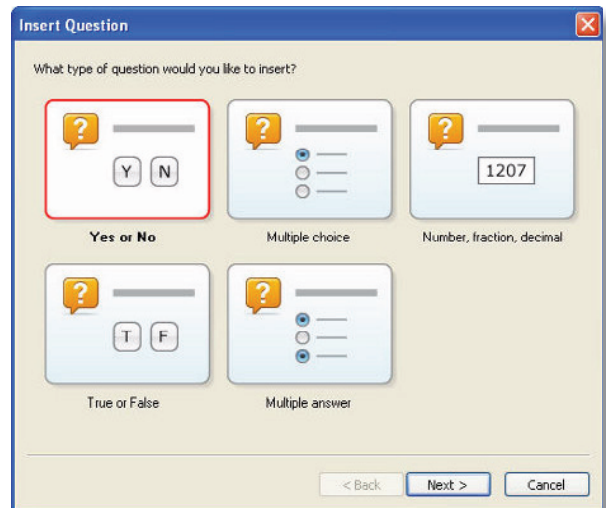
The **Next Steps** area in the SMART Response tab displays options for you to create the next page of your SMART Notebook file.

Adding questions

SMART Response assessment software allows you to create five different types of questions. You can select *Yes or No*, *Multiple Choice*, *Number, fraction, decimal*, *True or False*, and *Multiple answer*.

- 1 Click **Add a question to the next page**. The *Insert Question* window appears.
- 2 Click the type of question that you want to insert and click **Next**
- 3 Type your question in the field provided
- 4 Add any tags that you want to associate with the question and click **Next**
- 5 Type your answers in the field provided and click **Next**.
- 6 Select the correct answer and assign a point value to the question
- 7 Add any notes that you want to include in printed results
- 8 Click **Finish**. The question appears in SMART Notebook.

To add another question to your assessment, click **Add a question to the next page** and follow the steps above.



Preparing the assessment for delivery

Once you have added all of the questions that you want to include in your assessment, indicate the last page as the end of the assessment.

To indicate the end of the assessment

- 1 Click **Next Steps** in the SMART Response tab
- 2 Click **End << >> on this page**

